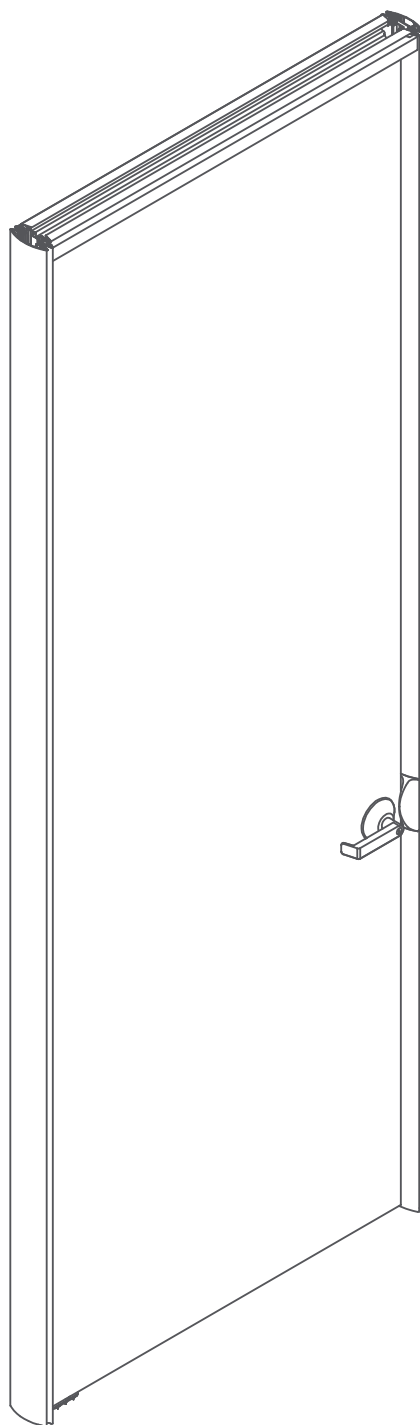


TECH SHEET

PIVOT DOOR SOLID CORE WOOD

build better™
DIRTT



COMPONENTS & MATERIALS

ALUMINUM EXTRUSIONS

- Door Frame Extrusions
 - Architectural Grade and Structural Aluminum Alloys
 - Aluminum Finish Options
 - Clear Anodized (5 micron standard)
 - Powder Coated
 - Veneer Wrapped
 - Custom as required

PVC COMPONENTS

- Frame Connections
 - Rigid/Flex Co-extrusion
- Ceiling Trim/Wall Start
 - Rigid/Flex Co-extrusion
- PVC Color Options
 - Black, Charcoal, Silver
 - Custom as required

DOOR SEAL COMPONENTS

- .400" Poly Pile (Available in Black or Grey)
- Full Height Continuous Strike Plate (anodized or powder coat finish only) with PVC door seal. Not available for Double Doors; strike plates in door header only.
- PVC Color Options – as above in PVC components

DOOR MATERIALS

- Super Ply frame (Maple vertical solids on Chromacoat doors)
- Particleboard Door Core
- Pressed thin high density fiberboard (door skin) both sides
- Solid edging on door verticals
 - Species of solid edging to match veneer (Veneer finish)
 - Maple Solid Edging (Chromacoat Finish)

OPTIONAL DOOR WITH GLASS LITE

- Same as Door Materials, along with:
 - Standard Tempered Glass ¼" (6mm) – Option ⅜" (10mm)
 - Standard Laminated Glass ¼" (6mm) – Option ⅜" (10mm)
 - Approved Custom Finishes
 - Solid glass stops 2 sides. ⅜" (5mm) x ¾" (19mm) (Glass Lite)
 - Applied muntins on glass lite (anodized or powder coat finish only)

DOOR FINISHES

- Chromacoat (painted) or Architectural Grade Veneer (stained)
 - UV Cured Water Based Finishes
- Color selection per manufacturer's standard range
- Custom color matches (client approval required)

DOOR HARDWARE

- Manufacturer's own top and bottom pivot hardware
- Falcon "B" Series Cylindrical Hardware with 2 ¾" backset
 - Quantum & Dane lever styles with 626 finish only
 - B511 Lockset, B101 Passage Set, B12 Dummy Trim
- Schlage "AL" Series Cylindrical Hardware with 2 ¾" backset
 - Jupiter, Neptune or Saturn lever styles with 626 finish only
 - AL50PD Lockset, AL10S Passage Set, AL170 Dummy Set
- DIRTT standard mounting height for levers is 38" (965mm) Above Finish Floor (AFF) to centerline of lever

OPTIONAL DOOR HARDWARE

- DIRTT Door Pulls
 - See separate DIRTT Pull specifications
 - See separate DIRTT Standard Pull Height
- Flush bolts, roller catches
- For Double Doors, Flush bolt on inactive door at the top
- 5 ⅝" (143mm) high strike plates
- DIRTT Approved Custom Hardware (Supplied "By Others")
- Compatible Door closers (Supplied "By Others")

DIMENSIONS & DETAILS

FRAME

Standard Frame Width (Module)	40" (1016mm)
Minimum Module Width	38" (965mm)
Maximum Module Width	44" (1118mm)
Double Frame Width (Module)	78 ⅛" (1984mm)
Minimum Module Width	74 ⅛" (1883mm)
Maximum Module Width	86 ⅛" (2188mm)
Standard Ceiling Height	Up to 120" (3048mm)
Standard Frame Depth	4" (102mm)
Lower Pivot Plate	Locate to adjacent module
Frame Height	Oversized in height; cut down on-site to suit opening

SLAB DOOR

Standard Door Thickness	1 1/16" (43mm)
Standard Door Width	38" (965mm)
Minimum Door Width	36" (914mm)
Maximum Door Width	42" (1067mm)
Standard Clear Opening Width	34 ⅛" (867mm)
	(5 ⅞" (149mm) less specified module width)
Standard Door Swing (From Closed Position)	
Rectilinear Frame Maximum	130° Clear Opening 30 1/16" (834mm)
Curvilinear Frame Max	135° Clear Opening 30 3/4" (831mm)
Double Door Clear Opening Width	1 Door Open 34 3/4" (882mm)
	2 Doors Open 69 3/8" (1762mm)
Door Height Adjustment	Oversized 1 7/8" (48mm) in height; cut down on-site to suit opening

OPTIONAL DOOR WITH GLASS LITE

Same as Slab Door measurements, along with:

Standard Vertical Door Stiles	6 3⁄16" (157mm)
Standard Top Horizontal	6 3⁄16" (157mm)
Standard Bottom Horizontal	8 1⁄16" (205mm) AFF
Optional ADA Bottom Horizontal	12 1⁄16" (307mm) AFF

FRAME CONNECTIONS

(DIRTT Wall and/or Drywall to Frame)	
Hidden Links	Frame alignment and gap control
Visible PVC Connectors	At frame connection between the door frame and the adjacent frame

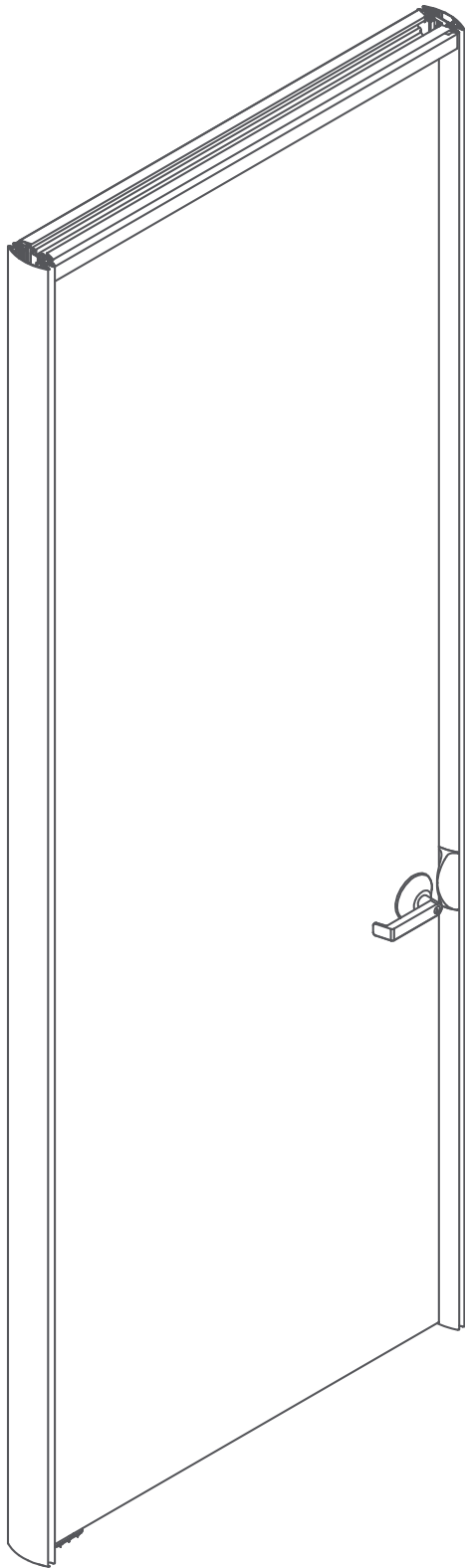
TRIM COMPONENTS

Ceiling Trim	Flexible trim from top of wall to ceiling
Wall Trim	Rigid connection from Door Frame to Base Building; combined with flexible Wall Trim

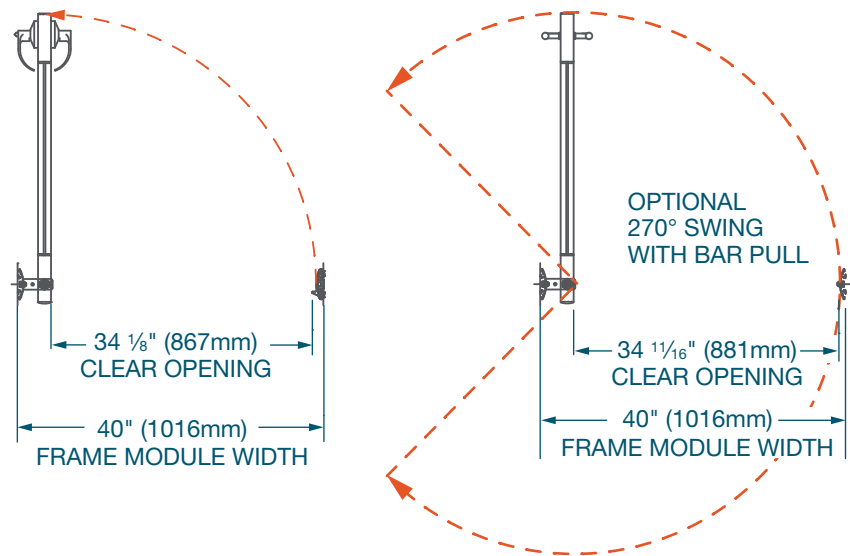
OTHER OPTIONS

- Parametric Door Sizes available
- Glass or Solid Transom over door (door frame option)

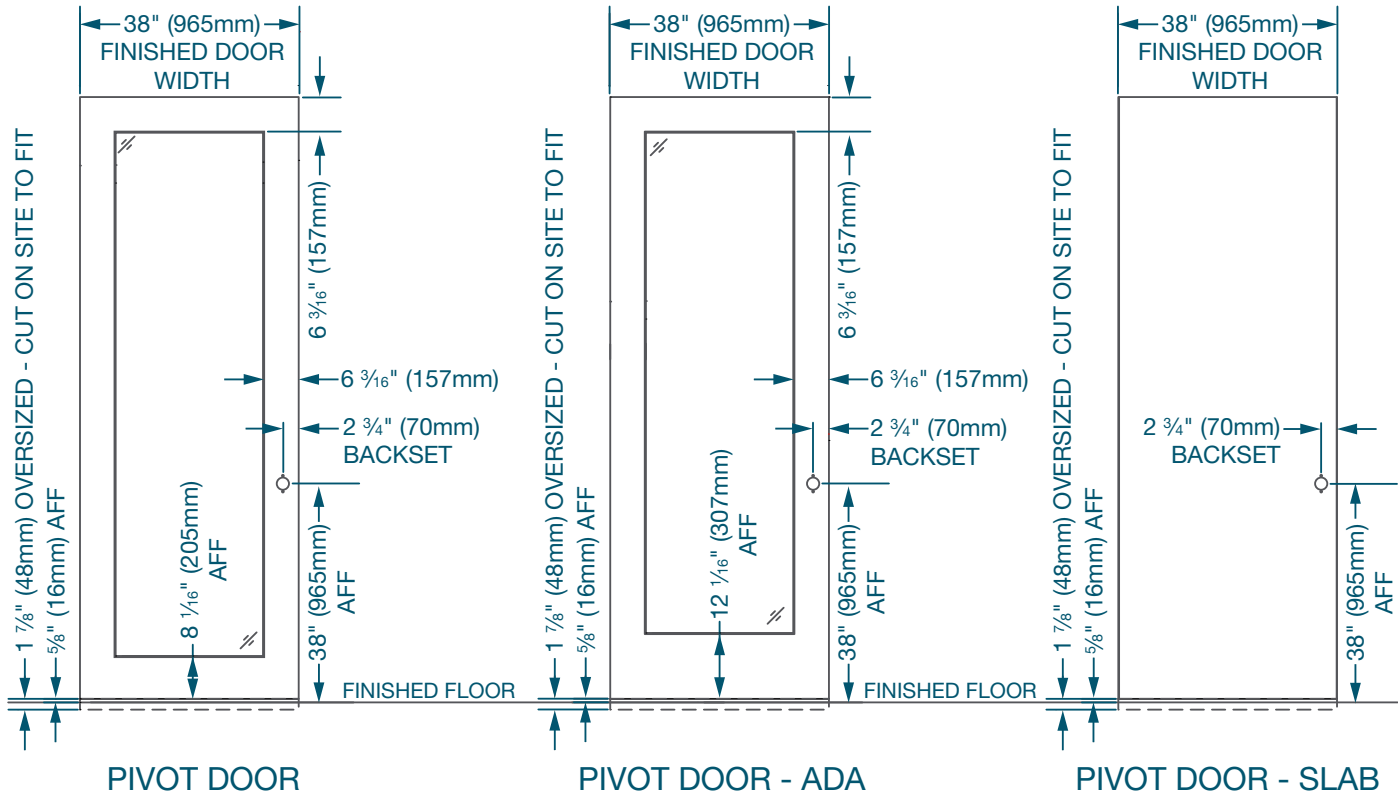
NOTE: DIRTT has designed the standard door sizes to have a consistent frame module width between styles and also consider the minimum clear opening widths as required by section 1008 of the International Building Code (IBC). It is understood that local codes may supersede these requirements, and that alternate sizes are allowable based on application. Any modification to door size must be reviewed and validated to ensure final solution is compliant to the applicable code.



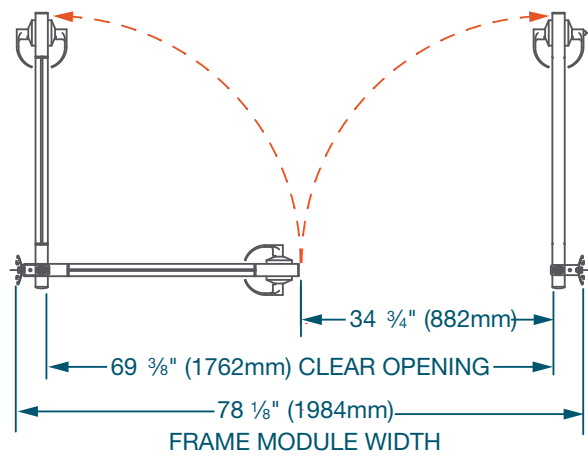
CLEARANCE - SINGLE DOOR



PLAN VIEW/ELEVATION
(NTS)



CLEARANCE - DOUBLE DOOR



PLAN VIEW/ELEVATION
(NTS)

